

Luton & Dunstable University Hospital Open (Direct) Access Endoscopy Pathway

Service

The GP Open (Direct) Access Endoscopy pathway to Luton & Dunstable University Hospital NHS Foundation Trust allows GPs to refer patients directly for an endoscopic procedure (either gastroscopy and/or flexible sigmoidoscopy) without a preliminary consultation with the Consultant/Endoscopist.

Patients requiring other endoscopic procedures must be referred to the respective speciality via outpatients.

Referral

GP Open (Direct) Access referrals are received from GP surgeries within the local healthcare community. The GP should complete the referral proforma with the relevant demographic and clinical details in accordance with the GP Open Access pathway. The referrals are triaged by a Consultant within 72 hours. Inappropriate referrals that do not meet the British Society of Gastroenterology criteria are rejected on the system with comments; it is the responsibility of the referring clinician to check the referral has been accepted.

Booking of Appointment

'Routine' category patients will receive an appointment letter and information by post.

Patients should **NOT** be encouraged to contact the Endoscopy Booking Office unless they are unable to attend the appointment.

Procedure

The procedure will take place in the Endoscopy Unit situated on the ground floor of the main building, next to Paediatric Outpatients. The access is via the hospital service road.

Post Procedure

Following the endoscopic procedure and consultation, a copy of the endoscopy report will be given to the patient and a copy sent directly to the GP.

If no histology is taken no further action is required by the Endoscopy Department.

If histology is taken the Consultant/Endoscopist will review the histology report and either

- If urgent ie sinister pathology, Endoscopist to organise further investigations and/or outpatient appointment as appropriate and the GP and patient will be informed by letter.
- If non urgent, the GP will be responsible for on-going management with referral to appropriate outpatient clinic if necessary. No letter will be sent and the GP will be responsible for informing the patient

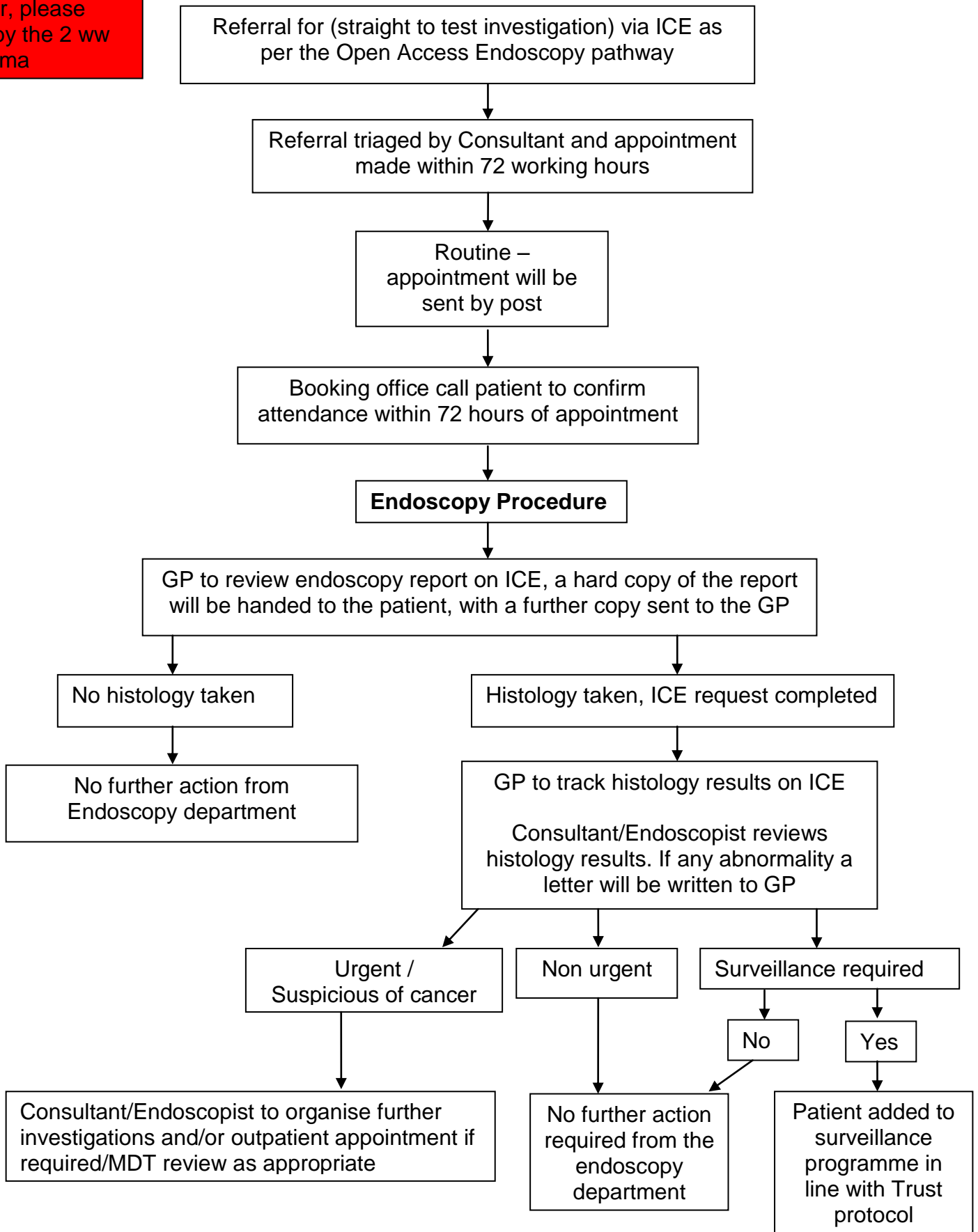
If it is identified that a future surveillance procedure is required, the patient will be added to the Endoscopy Surveillance Programme, in line with Trust protocol.

The GP will be expected to view the histology report on ICE

Treatment is usually initiated post procedure (eg *Helicobacter pylori* eradication) although there may be some instances where the patient will be required to be reviewed by the GP for further management and referral.

For those patients where there is a suspicion of cancer, please refer by the 2 ww proforma

Pathway for Open Access Endoscopy referrals



Please ensure that patients have capacity to consider this procedure. If not, a consent form (Mental health capacity/Best of interest) will need to be completed before referring